

QUBE 4

This original, wood-burning stove fully clad in large panels of hand-finished Majolica provides a stunning setting. The balance of forms and contrasting materials makes it unique and original choice in any setting. Available in Bianco Antico, Ardesia, Rosso Lava, Giallo Acceso and Sahara.



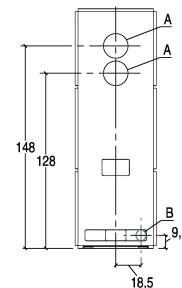
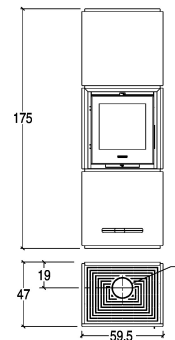
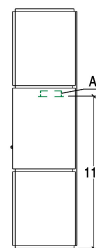
GENERAL FEATURES

- Heating: Multifuoco System® with 4 power levels, optional. Hot ductable air / Natural convection
- Front ventilation: adjustable vent
- Cladding: majolica
- One-piece firebox: steel
- Firebox: Aluker®
- Flue gas deflector / Brazier: Aluker® / cast iron
- Door / Handle: cast iron with ceramic glass resistant to 750°C / coated steel that can be opened with detachable handle
- Removable ash pan: yes
- Standard flue outlet position: top or rear
- Primary and secondary air: adjustable
- Pre-determined tertiary air: pre-heated
- Glass cleaning: continuous air flow
- Ash vacuum cleaner: optional
- Installation: wall - corner
- Wide view of the fire: yes

TECHNICAL DETAILS

- Energy efficiency class A
- Rated output max kW 9,0
- Rated efficiency power % 80,5
- Rated consumption max kg/h 2,7
- Weight kg 250
- Standard flue outlet Ø cm 15
- Model QUBE 4

COVERS



A	B
15 cm	7,5 cm