

# QUBE 4

This original, wood-burning stove fully clad in large panels of hand-finished Majolica provides a stunning setting. The balance of forms and contrasting materials makes it unique and original choice in any setting. Available in Bianco Antico, Ardesia, Rosso Lava, Giallo Acceso and Sahara.



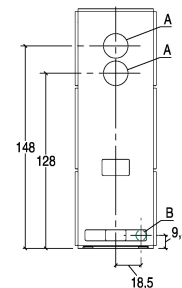
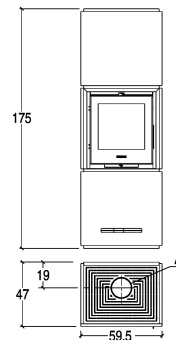
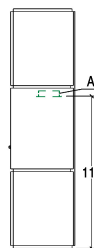
## GENERAL FEATURES

- Heating: Multifuoco System® with 4 power levels, optional. Hot ductable air / Natural convection
- Front ventilation: adjustable vent
- Cladding: majolica
- One-piece firebox: steel
- Firebox: Aluker®
- Flue gas deflector / Brazier: Aluker® / cast iron
- Door / Handle: cast iron with ceramic glass resistant to 750°C / coated steel that can be opened with detachable handle
- Removable ash pan: yes
- Standard flue outlet position: top or rear
- Primary and secondary air: adjustable
- Pre-determined tertiary air: pre-heated
- Glass cleaning: continuous air flow
- Ash vacuum cleaner: optional
- Installation: wall - corner
- Wide view of the fire: yes

## TECHNICAL DETAILS

- Energy efficiency class A
- Rated output max kW 9,0
- Rated thermal efficiency power % 80,5
- Rated consumption max kg/h 2,7
- Weight kg 250
- Standard flue outlet Ø cm 15
- Model QUBE 4

## COVERS



A	B
15 cm	7,5 cm